

Gilles Doneux
Lux Mutabilis

(2013)

Pour clarinette, violoncelle, piano, chœur d'enfants et électronique

Notes pour l'interprétation:

Les séquences de la parties électronique sont déclenchées par une pédale MIDI actionnée par le(la) violoncelliste.

Dans la partition les coups de pédales sont indiqués par: 01



s
Notation des quarts de ton:



Pour tous:

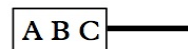
x → y Passer progressivement de x à y

x ↔ y Alternner entre x et y

ϕ ϕ Crescendo dal niente/
decrescendo al niente



Répéter rapidement ces notes (dans le désordre)



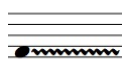
Répéter A B C pendant la durée du trait
(en changeant aléatoirement la vitesse)

Piano:

Clarinette:



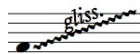
Bruit de souffle



Gratter le long de la corde



Multiphonique sur cette note



Glissendo en frottant les cordes (dans l'ambitus indiqué)

Violoncelle:



Etouffer la corde très proche du sillet
(pour obtenir un son étouffé mais résonant)



Corde étouffée



Etouffer totalement la corde



Pizz. "Bartok"

Voix:



Pizz. main gauche



Consonne (sans hauteur précise)



corde écrasée / non écrasée

s.t / s.p. Sul tasto / sul ponticello

x/y/x/y...

Osciller entre le son x et le son y

Lux Mutabilis

Gilles Doneux

Ca. 2 min. $\text{♩} = 57$

bisbi instable *lent* → *rapide* → *lent* → *rapide* → *lent*

Clarinet in B \flat

Violoncello

Piano

Electronics

01

02

arco s.p. (harmo.7)

legno bat. arco s.p. *lent*

mp *mp* *mf*

8^{va}

Plectre *gliss*

sfz *mp* *sfz*

Ped. Ped.

Cl. *bisbi instable* *7* *lent* *rapide* *mp* *bisbi instable* *lent* *rapide* *lent* *p*

The Clarinet part is written in treble clef with a key signature of one sharp (F#) and a 3/4 time signature. It begins with a dynamic of *mp* and features a tempo change from *lent* to *rapide*. The notation includes a fermata over a quarter note, followed by a series of eighth notes. A second tempo change occurs, moving from *lent* to *rapide* and back to *lent*. The piece concludes with a *p* dynamic and a five-fingered scale-like passage.

Vc. *rapide* *lent* *legno bat.* *arco s.p.* *tr.* *lent* *rapide* *lent* *legno bat.* *gliss.* *mp* *mf* *mp* *p*

The Violoncello part is written in bass clef with a 3/4 time signature. It starts with a *mp* dynamic and a tempo change from *rapide* to *lent*. The notation includes a trill (*tr.*) and a section marked *arco s.p.* (arco solo piano) with a tempo change from *lent* to *rapide* and back to *lent*. The piece ends with a *p* dynamic and a glissando (*gliss.*) effect.

Pno. *sfz* *plectre* *mp* *Ped.*

The Piano part is written in bass clef with a 3/4 time signature. It begins with a *sfz* (sforzando) dynamic and a *Ped.* (pedal) marking. The notation includes a plectrum (*plectre*) and a dynamic of *mp*. The piece concludes with a wavy line indicating a tremolo or sustained effect.

Elec. *3/4* *3/8* *4/4* *3/4* *3/8*

The Electric guitar part is represented by a series of time signature changes: 3/4, 3/8, 4/4, 3/4, and 3/8. The notation consists of vertical stems indicating rhythmic pulses.

Cl. *mf* ϕ \rightarrow + voix \rightarrow ord. *p* ϕ *p* ϕ *flat.*

Musical notation for Clarinet (Cl.) in treble clef. It starts at measure 14 with a *mf* dynamic. The piece is in 4/4 time, which changes to 3/4 time at measure 16. The notation includes a slur over two notes in the first system, a fermata, and a slur over two notes in the second system. Performance instructions include '+ voix' and 'ord.' with arrows pointing to the right, 'multiphonique doux' above the staff, and 'flat.' above the final note. Dynamics *p* are marked under the first and second systems. A ϕ symbol is placed under the first and second systems.

Vc. *mf* *get.* *arco* s.p. \leftrightarrow s.t. ad lib. *gliss.* \rightarrow molto vib. \rightarrow senza vib.

Musical notation for Violoncello (Vc.) in bass clef. It starts at measure 14 with a *mf* dynamic. The piece is in 4/4 time, which changes to 3/4 time at measure 16. The notation includes a slur over a group of notes in the first system, a *gliss.* marking over a slur in the second system, and a slur over a group of notes in the third system. Performance instructions include 'get.' above the first system, 'arco' above the second system, and 's.p. \leftrightarrow s.t. ad lib.' above the second system. Dynamics *p* is marked under the first system. A ϕ symbol is placed under the first system. Performance instructions ' \rightarrow molto vib.' and ' \rightarrow senza vib.' are placed above the staff.

Pno. *mf* *mf* *p* ³ *mf* *p* ³ *mf* *p* ³

Musical notation for Piano (Pno.) in grand staff. It starts at measure 14 with a *mf* dynamic. The piece is in 4/4 time, which changes to 3/4 time at measure 16. The notation includes slurs and triplets in both hands. Performance instructions include '15^{ma}' and '8^{va}' with dashed lines above notes in the right hand. Dynamics *mf* and *p* are marked in both hands. A ϕ symbol is placed under the first system.

Elec. $\frac{4}{4}$ $\frac{3}{4}$ $\frac{4}{4}$

Musical notation for Electric Bass (Elec.) in bass clef. It shows the time signature changes from 4/4 to 3/4 and back to 4/4.

Cl. 21

p *mf* *f*

Vc.

mf *f*

03 04

pizz.

Pno.

8va

6 7

mf *f*

Ped.

Elec. 4/4

♩=62

Ca. 50 Sec.

24

Cl.

Musical notation for Clarinet (Cl.) in 4/4 time. The staff begins with a whole rest. The first measure contains a half note G4. The second measure contains a half note A4. The third measure contains a half note B4. The fourth measure contains a half note C5. The fifth measure contains a half note D5. The sixth measure contains a half note E5. The seventh measure contains a half note F5. The eighth measure contains a half note G5. The ninth measure contains a half note A5. The tenth measure contains a half note B5. The eleventh measure contains a half note C6. The twelfth measure contains a half note D6. The thirteenth measure contains a half note E6. The fourteenth measure contains a half note F6. The fifteenth measure contains a half note G6. The sixteenth measure contains a half note A6. The seventeenth measure contains a half note B6. The eighteenth measure contains a half note C7. The nineteenth measure contains a half note D7. The twentieth measure contains a half note E7. The twenty-first measure contains a half note F7. The twenty-second measure contains a half note G7. The twenty-third measure contains a half note A7. The twenty-fourth measure contains a half note B7. The notation includes dynamics *mf*, *p*, and *p*, a triplet of eighth notes in the seventh measure, and a trill in the twenty-third measure.

Vc.

Musical notation for Violin (Vc.) in 4/4 time. The staff begins with a whole rest. The first measure contains a half note G2. The second measure contains a half note A2. The third measure contains a half note B2. The fourth measure contains a half note C3. The fifth measure contains a half note D3. The sixth measure contains a half note E3. The seventh measure contains a half note F3. The eighth measure contains a half note G3. The ninth measure contains a half note A3. The tenth measure contains a half note B3. The eleventh measure contains a half note C4. The twelfth measure contains a half note D4. The thirteenth measure contains a half note E4. The fourteenth measure contains a half note F4. The fifteenth measure contains a half note G4. The sixteenth measure contains a half note A4. The seventeenth measure contains a half note B4. The eighteenth measure contains a half note C5. The nineteenth measure contains a half note D5. The twentieth measure contains a half note E5. The twenty-first measure contains a half note F5. The twenty-second measure contains a half note G5. The twenty-third measure contains a half note A5. The twenty-fourth measure contains a half note B5. The notation includes dynamics *mf* and *p*, a glissando in the third measure, a box labeled '05' with a downward arrow pointing to the fifth measure, and a trill in the twenty-third measure.

Pno.

Musical notation for Piano (Pno.) in 4/4 time. The staff begins with a whole rest. The first measure contains a half note G2. The second measure contains a half note A2. The third measure contains a half note B2. The fourth measure contains a half note C3. The fifth measure contains a half note D3. The sixth measure contains a half note E3. The seventh measure contains a half note F3. The eighth measure contains a half note G3. The ninth measure contains a half note A3. The tenth measure contains a half note B3. The eleventh measure contains a half note C4. The twelfth measure contains a half note D4. The thirteenth measure contains a half note E4. The fourteenth measure contains a half note F4. The fifteenth measure contains a half note G4. The sixteenth measure contains a half note A4. The seventeenth measure contains a half note B4. The eighteenth measure contains a half note C5. The nineteenth measure contains a half note D5. The twentieth measure contains a half note E5. The twenty-first measure contains a half note F5. The twenty-second measure contains a half note G5. The twenty-third measure contains a half note A5. The twenty-fourth measure contains a half note B5. The notation includes dynamics *mf* and *p*, a triplet of eighth notes in the seventh measure, and a trill in the twenty-third measure.

Ped.

Elec.

Musical notation for Electric Bass (Elec.) in 4/4 time. The staff begins with a whole rest. The first measure contains a half note G2. The second measure contains a half note A2. The third measure contains a half note B2. The fourth measure contains a half note C3. The fifth measure contains a half note D3. The sixth measure contains a half note E3. The seventh measure contains a half note F3. The eighth measure contains a half note G3. The ninth measure contains a half note A3. The tenth measure contains a half note B3. The eleventh measure contains a half note C4. The twelfth measure contains a half note D4. The thirteenth measure contains a half note E4. The fourteenth measure contains a half note F4. The fifteenth measure contains a half note G4. The sixteenth measure contains a half note A4. The seventeenth measure contains a half note B4. The eighteenth measure contains a half note C5. The nineteenth measure contains a half note D5. The twentieth measure contains a half note E5. The twenty-first measure contains a half note F5. The twenty-second measure contains a half note G5. The twenty-third measure contains a half note A5. The twenty-fourth measure contains a half note B5.

Cl. *30* (tr) *f* *mf* *p* *mf* *mf* *bisbi. rapide* *lent*

Detailed description: The Clarinet part begins with a trill (tr) in the treble clef. The music is in 5/4, 3/4, and 4/4 time signatures. It features dynamic markings of *f*, *mf*, *p*, and *mf*. A phrase is marked "bisbi. rapide" with an arrow pointing to "lent". The piece concludes with a triplet of eighth notes.

Vc. (tr) legno bat. *f* *mf* *p* *mf* *rapide* *lent* *rapide* *lent* *arco* *tr*

Detailed description: The Violoncello part starts with a trill (tr) and is marked "legno bat.". It features dynamic markings of *f*, *mf*, *p*, and *mf*. The piece includes sections marked "rapide" and "lent", with a section labeled "arco tr" (arco trill). The notation includes a triplet of eighth notes.

Pno. *f* *mf* *5* *3* *Ped.*

Detailed description: The Piano part features a complex texture with a five-fingered scale-like passage (5) in the right hand. It includes dynamic markings of *f* and *mf*. The piece concludes with a triplet of eighth notes and a pedal (Ped.) marking.

Elec. *3/8* *5/4* *3/4* *4/4*

Detailed description: The Electric Bass part is represented by a single staff with a double bar line at the beginning and rests for the remainder of the piece, indicating it is not played.

36

Cl.

Musical staff for Clarinet (Cl.) in 4/4 time. It features a long note with a slur and a hairpin crescendo labeled *ad lib.* leading to a dynamic marking of *fp*. The staff then changes to 3/4 time, with a dynamic marking of *f* and a slur over a triplet of notes.

Vc.

Musical staff for Violoncello (Vc.) in 4/4 time. It includes a box labeled '09' with a downward arrow, a slur with a hairpin crescendo labeled *ad lib.*, and a glissando marking (*gliss.*) with a wavy line. The staff changes to 3/4 time, featuring a dynamic marking of *f* and a slur over a triplet of notes. A box labeled '10' with a downward arrow is also present.

Pno.

Musical staff for Piano (Pno.) in 4/4 time. It shows a dynamic marking of *f* and a slur over a triplet of notes. The staff changes to 3/4 time. Below the staff, there are two markings for the sustain pedal: *Ped.* with a line indicating the pedal is held down.

Elec.

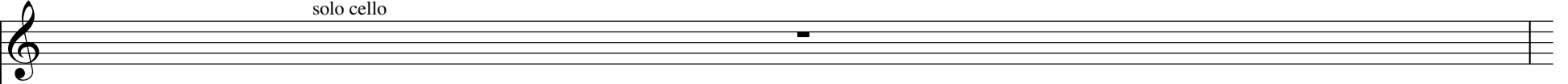
Musical staff for Electric Bass (Elec.) in 4/4 time. It features a series of quarter notes on a single line. The staff changes to 3/4 time, with a series of quarter notes.

42

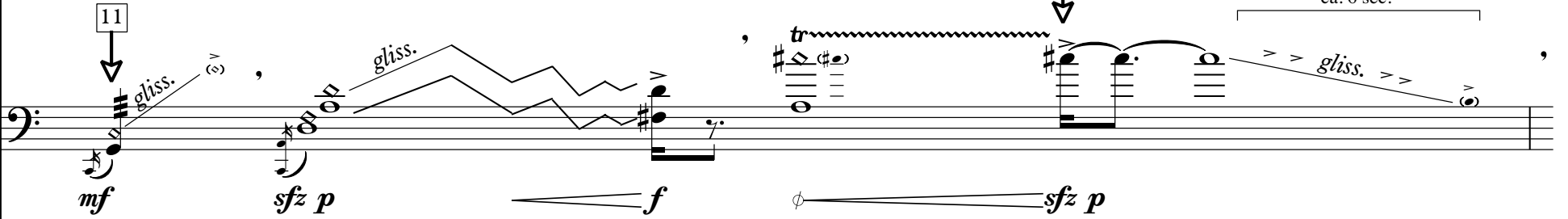
Libre

solo cello

Cl.



Vc.



11

mf

gliss.

sfz p

gliss.

f

12

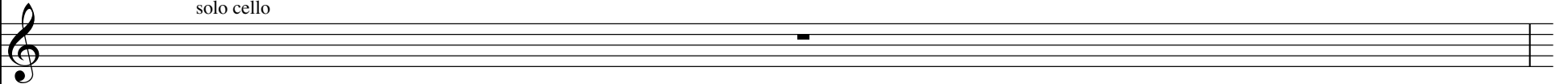
sfz p

gliss.

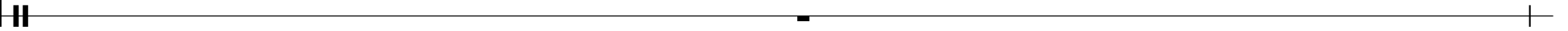
ca. 6 sec.

Pno.

solo cello



Elec.



12

$\text{♩}=76$

43
Cl.

Vc.

legno bat.

13

14

15

ca 5 sec.

16

arco

f

mp

Pno.

mp

Ped.

Elec.

Cl. 47 *sfz* [d] [o] *mf* *p*

The Clarinet staff begins at measure 47. It starts with a *sfz* dynamic and a quarter note G4. The melody then consists of a series of eighth notes: A4, Bb4, A4, G4, F4, E4, D4, C4, B3, A3, G3, F3, E3, D3, C3, B2, A2, G2. The dynamic changes to *mf* for the latter part of this sequence. The staff concludes with a quarter rest followed by a half note G2, marked *p*.

Vc. pizz. 17 legno bat. 18 legno get. *mf* *p*

The Violoncello staff starts with a *pizz.* marking at measure 17. The notes are G2, F2, E2, D2, C2, B1, A1, G1. The dynamic is *mf*. At measure 18, there is a *legno bat.* marking with a downward arrow, followed by a *legno get.* marking with a downward arrow and a box containing the number 18. The notes are G1, F1, E1, D1, C1, B0, A0, G0. The dynamic then changes to *p*. The staff ends with a quarter rest.

Pno. [d] [o] [o] [o]

The Piano staff features a complex texture. The right hand has a series of notes: G4, F4, E4, D4, C4, B3, A3, G3, F3, E3, D3, C3, B2, A2, G2. The left hand has a series of notes: G2, F2, E2, D2, C2, B1, A1, G1. The dynamic is *mf*. There are various markings above the notes, including 'x' and 'b'. The staff concludes with a quarter rest.

Elec. 4/4

The Electric guitar staff is marked with a 4/4 time signature and contains a series of quarter rests.

51

Cl. *gliss.* *gliss.* *gliss.* *gliss.* *gliss.* *gliss.* *p*

Vc. arco s.p. 19 20 ord. *p*

Pno. *p* Ped.

Elec.

58

Cl. $\xrightarrow{\text{flat.}}$ $\xrightarrow{\text{multi.}}$ $\xrightarrow{\text{ord.}}$

Vc. *gliss.* 21 *gliss.* 22 23 *gliss.* $\xrightarrow{\text{ord.}}$ $\xrightarrow{\text{ord.}}$

Pno. *p* *p* *mf* *Red.*

Elec.

Cl. 64

Musical notation for Clarinet (Cl.) in 3/4 time, starting at measure 64. The piece is in G major. The notation includes a dynamic marking of *mf* and a section of tremolos in 3/4 time. The tempo is marked as ♩=82.

Vc.

Musical notation for Violoncello (Vc.) in 3/4 time. It features glissando markings (*gliss.*) and dynamic markings of *mf*. Boxed numbers 24, 25, 26, and 27 are placed above the staff with arrows pointing to specific notes. A second ending bracket labeled "II." is present at the end of the section.

Pno.

Musical notation for Piano (Pno.) in 3/4 time. It includes a dynamic marking of *mf* and a section of tremolos. Pedal markings (*Ped.*) are indicated below the staff.

Elec.

Musical notation for Electric Bass (Elec.) in 3/4 time, consisting of a series of rests. It includes a dynamic marking of *mf* and a tempo marking of ♩=82.

Cl. *f* multi. ord. multi. *sfz p* *f*

Musical notation for Clarinet (Cl.) in 4/4, 5/4, 3/4, and 4/4 time signatures. The piece starts with a forte (*f*) dynamic. It features multi-measure rests (multi.) and an order change (ord.) at the beginning. The notation includes slurs, accents, and dynamic markings such as *sfz p* and *f*. There are also triplet markings (3) in the later measures.

Vc. 28 29 s.p. 30 31 ord. *f* *f* *f* *f* *f*

Musical notation for Violoncello (Vc.) in 4/4, 5/4, 3/4, and 4/4 time signatures. It includes multi-measure rests (28, 29, 30, 31) and an order change (ord.). The notation features slurs, accents, and dynamic markings such as *f*. There are also triplet markings (3) and a section marked *s.p.* (sordano).

Pno. *f* Ped. *f* Ped. *f* Ped. *f* Ped.

Musical notation for Piano (Pno.) in 4/4, 5/4, 3/4, and 4/4 time signatures. It features a forte (*f*) dynamic and includes pedal markings (Ped.) under the bass line. The notation includes slurs, accents, and dynamic markings such as *f*. There are also triplet markings (3) in the later measures.

Elec. 4/4 5/4 3/4 3/4 4/4

Musical notation for Electric Bass (Elec.) in 4/4, 5/4, 3/4, 3/4, and 4/4 time signatures. It consists of a single line with rests corresponding to the time signatures.

77 $\text{♩} = 88$ *très bruiteux*
 Cl. *fff*

The Clarinet part begins at measure 77 with a tempo of 88 bpm. It features a series of notes with slurs and accents, some marked with a 'tr' (trill) symbol. The dynamics are marked as *fff* (fortissimo) with a hairpin indicating a crescendo.

Vc. *fff* *arco* *gliss.* *mf* *fff*

32 33 34 35 36

The Violin part starts at measure 32. It includes a section marked *arco* (arco) and *gliss.* (glissando). There are triplet markings (3) and dynamic markings of *fff*, *mf*, and *fff*. Measures 32-36 are indicated by numbered boxes with arrows pointing to specific notes.

Pno. *fff* *Ped.* *8va* *fff* *Ped.*

The Piano part consists of two staves. It features chords and textures with dynamic markings of *fff* and *mf*. Pedal markings (*Ped.*) are present. An *8va* (octave up) marking is shown above a specific chord.

Elec. $\text{♩} = 88$

The Electric Bass part shows a sequence of time signatures: 4/4, 3/4, 2/4, 4/4, 3/4, 3/4. It includes a tempo marking of 88 bpm.

85 Cl. *mf* *f* *gliss.* 3

Musical notation for Clarinet (Cl.) in 4/4 time. The staff begins with a treble clef and a key signature of one sharp (F#). The music starts with a series of eighth notes, followed by a glissando over a half note. The dynamics are marked *mf* and *f*. A triplet of eighth notes is indicated with a '3' below the staff.

Vc. *f* 37 pizz. legno bat. 38 pizz. 40 arco 41 legno get. 6

Musical notation for Violin (Vc.) in 4/4 time. The staff begins with a treble clef and a key signature of one sharp (F#). The music starts with a series of eighth notes, followed by a pizzicato (pizz.) section. A box labeled '37' points to the start of the pizzicato. The dynamic is marked *f*. The notation includes 'legno bat.' (wood block), another pizzicato section (pizz.), 'arco' (arco), and 'legno get.' (wood block). A box labeled '38' points to the start of the second pizzicato, '40' points to the start of the arco section, and '41' points to the start of the final wood block section. A triplet of eighth notes is indicated with a '6' below the staff.

Pno. *f* 8va 8va 3

Musical notation for Piano (Pno.) in 4/4 time. The staff begins with a treble clef and a key signature of one sharp (F#). The music starts with a series of eighth notes, followed by a section marked *f*. The notation includes '8va' (octave up) markings. A triplet of eighth notes is indicated with a '3' below the staff.

Elec. 4/4 3/8 4/4

Musical notation for Electric Bass (Elec.) in 4/4 time. The staff begins with a bass clef and a key signature of one sharp (F#). The music starts with a series of eighth notes, followed by a section marked *f*. The notation includes '4/4', '3/8', and '4/4' time signatures.

91

Cl.

sfz p

5

Vc.

pizz.

arco

42

3

5

3

s.p.

Pno.

sfz p

tr

5

6

3

fff

Ped.

Elec.

94 Cl. *fff*

Musical notation for Clarinet (Cl.) in 3/4 time. The staff begins with a treble clef and a key signature of one flat. It features a series of notes with accents and slurs, including a trill-like figure. The dynamics are marked *fff*. The piece concludes with a 3/4 time signature.

Vc. *fff*

43 ord. *gliss.*

44 3

45 *gliss.*

Musical notation for Violin (Vc.) in 3/4 time. The staff begins with a treble clef and a key signature of one flat. It includes a trill (43), an ordered glissando (ord. *gliss.*), a triplet (44), and another glissando (45). The dynamics are marked *fff*. The piece concludes with a 3/4 time signature.

Pno.

8va

3

3

f

Ped.

Musical notation for Piano (Pno.) in 3/4 time. The staff consists of two staves (treble and bass clefs). It features chords, triplets, and a section marked *8va* (octave up). The dynamics range from *f* to *fff*. Pedal markings (Ped.) are present. The piece concludes with a 3/4 time signature.

Elec.

Musical notation for Electric Bass (Elec.) in 3/4 time. The staff begins with a bass clef and a key signature of one flat. It consists of a single line of notes, likely representing a bass line. The piece concludes with a 3/4 time signature.

99 flat.

Cl.

Vc.

Pno.

Elec.

mf

mp

mp

mp

mf

p

mp

mp

mf

p

mp

pizz.

46

47

48

gliss.

Ped.

Ped.

3/4

2/4

4/4

3/4

3/4

Répéter ces 2 mesures
et attendre Nawal

106 *détimbré*

Cl.

p *p* *p* *p*

49

Vc.

mp arco s.t.

p *p* *p* *p*

Répéter ces 2 mesures
et attendre Nawal

direction
choeur

Pno.

p *p* *p* *p*

Elec.

p *p* *p* *p*

24

♩=68

115

Cl.

Clarinete staff (Cl.) in 4/4 time, starting at measure 115. Dynamics include *p* (piano) and *mf* (mezzo-forte). Articulation marks include accents and slurs.

Vc.

Violoncello staff (Vc.) in 4/4 time. Includes numbered boxes 50, 51, 52, 53, and 54 with arrows pointing to specific notes. Dynamics include *p* (piano) and *mf* (mezzo-forte). Performance instructions include *legno bat.* (legno baton) and *pizz.* (pizzicato).

V1

Violino I staff (V1) in 4/4 time. Lyrics: *tktktk...*, *tktktk...*, *s h ou*. Dynamics include *p* (piano), *mp* (mezzo-piano), and *mf* (mezzo-forte).

V2

Violino II staff (V2) in 4/4 time. Lyrics: *tktktk...*, *tktktk...*, *ks*. Dynamics include *p* (piano), *mp* (mezzo-piano), and *mf* (mezzo-forte).

Elec.

Electric guitar staff (Elec.) showing time signature changes: 4/4, 3/4, 4/4, 3/4.

123

Cl. *mf* *p* *f*

Vc. arco s.p. 55 56 ord. 57 58 pizz. 59 60 *mf* *f*

V1 *mf* *mf* *sfz mp* *mp* *f*
 t tou/o/ou/o... kou/o/ou/o... o

V2 *mf* *mf* *sfz mp* *mp* *f*
 tktktk... tou tou/o/ou/o... s sou é

Elec. $\frac{4}{4}$ $\frac{3}{4}$ $\frac{4}{4}$

Detailed description of the musical score: The score is for a chamber ensemble consisting of Clarinet (Cl.), Violoncello (Vc.), Violin I (V1), Violin II (V2), and Electric guitar (Elec.). The piece is in 4/4 time, with a 3/4 section in the middle. The Cl. part starts with a *mf* dynamic, followed by a *p* section and a *f* section. The Vc. part is marked *arco s.p.* and includes performance markings for measures 55, 56, 57, 58, 59, and 60. The V1 and V2 parts have lyrics in French: V1: t, tou/o/ou/o..., kou/o/ou/o..., o; V2: tktktk..., tou, tou/o/ou/o..., s, sou, é. Dynamics range from *mf* to *f*, with a *sfz mp* marking. The Elec. part is indicated by a double bar line and rests in 4/4, 3/4, and 4/4 time signatures.

133

Cl.

Musical staff for Clarinet (Cl.) in 4/4 time. It begins with a dynamic marking of *mf* and a fermata. The staff contains several measures of rests, followed by a melodic line starting with a dynamic marking of *sfz mp* and ending with a dynamic marking of *f*.

Vc.

Musical staff for Violoncello (Vc.) in 4/4 time. It features dynamic markings of *mf*, *sfz mp*, *mf*, and *f*. Performance instructions include *arco* and *pizz.*. Measure numbers 61 through 68 are indicated with arrows pointing to specific notes.

V1

Musical staff for Voice 1 (V1) in 4/4 time. It includes dynamic markings of *mf*, *sfz mp*, *sfz mp*, *sfz mp*, *sfz mp*, *mp*, and *f*. The lyrics are: ttkk... s sou ti ttkk.. tou kéiéi... so nou bi

V2

Musical staff for Voice 2 (V2) in 4/4 time. It includes dynamic markings of *mf*, *sfz mp*, *sfz mp*, *sfz mp*, *sfz mp*, *mp*, and *f*. The lyrics are: ttkk... tou é ou é... ba ti so kéiéi... sou nou bi

Elec.

Musical staff for Electric Percussion (Elec.) in 4/4 time. It shows the rhythmic structure with time signature changes from 4/4 to 3/4 and back to 4/4.

Cl. ¹⁴² *mp* *mp*

The Clarinet part begins with a treble clef and a key signature of one sharp (F#). It features a series of rests followed by a melodic line starting in 3/4 time, transitioning to 4/4, and then back to 3/4. Dynamics include *mp* (mezzo-piano) with hairpins indicating volume changes.

Vc. *mp* *gliss.* *gliss.*

The Violoncello part is in bass clef. It starts with a rest, then a melodic line in 3/4 time, transitioning to 4/4, and then back to 3/4. Dynamics include *mp* (mezzo-piano) and *gliss.* (glissando). Performance instructions include *s.p. ↔ s.t.* (sordino piano ↔ sordino tenuto) and numbered arrows pointing to measures 69 and 70.

V1 *f* *f*

s [latin] sol sub - bis la - tu - i - t sol sub -

The first vocal part (V1) is in treble clef. It features a melodic line with lyrics: "s [latin] sol sub - bis la - tu - i - t sol sub -". Dynamics include *f* (forte).

V2 *f* *f*

s [latin] sol sub nu - bis la - tu - i - t tktk... sol sub nu -

The second vocal part (V2) is in treble clef. It features a melodic line with lyrics: "s [latin] sol sub nu - bis la - tu - i - t tktk... sol sub nu -". Dynamics include *f* (forte).

Elec. *3/4* *4/4* *3/4*

The Electric Bass part is shown as a series of rests on a staff with a double bar line. Time signatures 3/4, 4/4, and 3/4 are indicated below the staff.

Cl. 151

Musical notation for Clarinet (Cl.) in treble clef. It begins with a rest, followed by a series of notes with dynamic markings *f*, *ff*, and *mf*. The piece concludes with a trill and a fermata. A hairpin indicates a crescendo leading to the *ff* dynamic.

Vc.

Musical notation for Violoncello (Vc.) in bass clef. It starts with a first violin part (II. I.) and a pizzicato section (pizz.) marked with a box containing the number 71. It then moves to arco playing, with dynamic markings *f*, *ff*, and *mf*. Further markings include a box with 72, a box with 73, a box with 74, and a box with 75. A hairpin indicates a crescendo leading to the *ff* dynamic.

V1

Musical notation for Violin 1 (V1) in treble clef. It features the lyrics "bis la - tu - it" and dynamic markings *ff* and *mf*. A hairpin indicates a crescendo leading to the *ff* dynamic.

V2

Musical notation for Violin 2 (V2) in treble clef. It features the lyrics "bis la - tu - it" and dynamic markings *ff* and *mf*. A hairpin indicates a crescendo leading to the *ff* dynamic.

Elec.

Musical notation for Electric Bass (Elec.) showing a rhythmic line with rests and dynamic markings *ff* and *mf*. It includes time signature changes from 2/4 to 4/4. The piece ends with a fermata and the instruction "fin: ♩=62".

♩=62

rall. la trille

Cl. 160

Cl. 160

f *mp* *p* *mf*

Trills and dynamics for Clarinet: *f*, *mp*, *p*, *mf*. Includes a trill marked "rall. la trille" and a triplet of eighth notes.

Vc. 76 77

Vc. 76 77

f *mp* *p* *mf*

Trills and dynamics for Violoncello: *f*, *mp*, *p*, *mf*. Includes trills and a triplet of eighth notes.

Pno. 8va

Pno. 8va

f *mp* *sfz p* *mf*

Trills and dynamics for Piano: *f*, *mp*, *sfz p*, *mf*. Includes trills, triplets, and an 8va marking.

Red.

Red.

Elec.

Electric Bass line with rests and a trill-like flourish.

3/4 5/8 4/4

Ca. 15 sec.

Cl. ¹⁶⁵

f *p* *tr* 6

Detailed description: Clarinet part in 4/4 time, starting with a forte (*f*) dynamic. It features a long, sustained note with a tremolo effect. The tempo is marked as approximately 15 seconds. The piece concludes with a piano (*p*) dynamic, a trill (*tr*), and a sixteenth-note run ending on a sixteenth note (6).

Vc.

f *p* *tr* 81

78 79 80

Detailed description: Violoncello part in 4/4 time, starting with a forte (*f*) dynamic. It features a long, sustained note with a tremolo effect. The piece concludes with a piano (*p*) dynamic, a trill (*tr*), and a sixteenth-note run ending on a sixteenth note (81). Fingerings 78, 79, and 80 are indicated above the staff.

Pno.

f *p* *tr* 5

Detailed description: Piano part in 4/4 time, starting with a forte (*f*) dynamic. It features a long, sustained note with a tremolo effect. The piece concludes with a piano (*p*) dynamic, a trill (*tr*), and a sixteenth-note run ending on a sixteenth note (5). A triplet of eighth notes is also present.

Elec.

Red. fin : ♩=69

Detailed description: Electric Bass part in 4/4 time, starting with a forte (*f*) dynamic. It features a long, sustained note with a tremolo effect. The piece concludes with a piano (*p*) dynamic, a trill (*tr*), and a sixteenth-note run ending on a sixteenth note (5). A triplet of eighth notes is also present. The word "Red." is written below the staff.

Cl. 170 *fp fp* *f* *tr* *mf*

Musical notation for Clarinet (Cl.) in treble clef. It features a melodic line with slurs, accents, and dynamic markings. The dynamics are *fp*, *fp*, *f*, and *mf*. There are trills and triplet markings. A fermata is present over a measure.

Vc. 82 83 84 *f mp* *pizz.* *f mp* *arco* *mf*

Musical notation for Violoncello (Vc.) in bass clef. It includes pizzicato and arco sections. Dynamics range from *f* to *mf*. There are triplet markings and a fermata. Boxed numbers 82, 83, and 84 indicate specific measures.

Pno. *f mp* *f mp* *mf* *tr*

Musical notation for Piano (Pno.) in grand staff. The right hand has chords and melodic lines, while the left hand has a rhythmic accompaniment. Dynamics include *f*, *mp*, *f*, *mp*, and *mf*. There are triplet markings and a trill. A pedaling line is shown below the staff.

Elec. ||

Musical notation for Electric Bass (Elec.) in bass clef, consisting of a single line with a double bar line at the beginning.

174 *p* *mp* *tr* *3*

Cl.

p *mp* *tr* *3*

85 *s.p.* 86 87 *ord.* 88 *gliss.* *gliss.* *tr*

Vc.

p *mp* *gliss.* *gliss.* *tr*

p *mp* *tr*

Pno.

p *mp* *tr*

Ped. *Ped.*

Elec. *♩*=76

181

Cl. *f* *f mp* *fp*

Vc. *f* *f mp* *pizz.* *f* arco s.t. *tr* *mp*

V1 *sfz p* *sfz p* *mp* *mp*
 dou/o/ou/o... s sdé/ou/é/ou... é/ou/é/ou... é/ou/é/ou...

V2 *sfz p* *sfz p* *mp* *mp*
 dou/o/ou/o... dé/ou/é/ou... a/ou/a/ou... a/ou/a/ou...

Pno. *f* *mp* *Ped.* 3 3

Elec. 4/4

188

Cl. *fp* *mf* *f*

Vc. (tr) *sfz* *mf* *arco* *arco get.* *f* *gliss.*

V1 *sfz* *sfz p* *sfz p* *mf* *sfz p* *f*
 é/ou/é/ou... é ta/i/a/i... ta/i/a/i... sé lo sé lo stè t

V2 *sfz* *sfz p* *sfz p* *mf* *sfz p* *f*
 a/ou/a/ou... à té/ou/é/ou... té/ou/é/ou... s sé lo sé lo na stè t

Pno. *f*

Elec.

196 *détimbré*

Cl.

Vc. *s.t. ↔ s.p. ad lib.* *p* *gliss.* 97 *tr.*

V1 *mp* *p* *mp*
 va na sto lè ma ra ri ma la sté no sva no sva sa (latin)

V2 *p* *mp* *p* *mp*
 va rè djé ni sa lé ro sé na ri djé tè (latin)

Pno. *p* *Ped.*

Elec.

204

Cl. *mf* *f* *p cresc. poco a poco* *gliss.*

Vc. *mf* *f* *p cresc. poco a poco* *gliss.* *pizz.* *arco* *pizz. arco*

V1 *mf* *p cresc. poco a poco*
 sa lva nos lva sa no lva no -

V2 *mf* *p cresc. poco a poco*
 sa lva nos (salva nos) sa no lva sa no -

Pno. *mf* *f* *p cresc. poco a poco* *tr* *8va*

Elec. $\frac{3}{4}$

211

Cl.

Musical staff for Clarinet (Cl.) in 4/4 time. It begins with a whole note G4, followed by a half note A4, and then a half note B4. A slur covers the next two measures: a half note C5 and a half note D5. The final measure contains a half note E5 with a trill (tr) and a fermata, followed by a whole rest.

Vc.

Musical staff for Violoncello (Vc.) in 4/4 time. It starts with a whole rest, then a half note G2. A box labeled '101' with a downward arrow points to the first measure. The second measure has a half note A2 with a box labeled '102' and a downward arrow. The third measure is a whole rest with 'pizz.' above it. The fourth measure is a half note B2 with 'arco' and a trill above it. The fifth measure is a whole rest with 'pizz.' above it. The sixth measure is a half note C3 with 'arco' and a trill above it. The seventh measure has a half note D3 with a box labeled '103' and a downward arrow. The eighth measure has a half note E3 with a box labeled '104' and a downward arrow. The final measure is a whole rest.

V1

Musical staff for Violin 1 (V1) in 4/4 time. It begins with a whole rest, then a half note G4. A slur covers the next two measures: a half note A4 and a half note B4. The final measure contains a half note C5 with a fermata. The lyrics 's ste ma la ste ma - ris' are written below the staff.

V2

Musical staff for Violin 2 (V2) in 4/4 time. It begins with a whole rest, then a half note G4. A slur covers the next two measures: a half note A4 and a half note B4. The final measure contains a half note C5 with a fermata. The lyrics 's la ste ma la ma - ris' are written below the staff.

Pno.

Musical staff for Piano (Pno.) in 4/4 time. It starts with a whole rest, then a half note G2. A slur covers the next two measures: a half note A2 and a half note B2. The final measure contains a half note C3 with a fermata.

Elec.

Musical staff for Electric Bass (Elec.) in 4/4 time. It consists of a whole rest for the entire duration. A fermata is placed over the final measure, with the number '82' written below it.

217

Cl. *sfz p* > *f* *gliss.* *tr* *f*

Vc. *f* *sfz p* < *f* *tr* *pizz.* *arco* *mp* *sfz p* > *f*

V1 *f* sal - va nos stel - la ma - ris et re - gi - na ce - lo - rum sal - va nos stel -

V2 *f* sal - va nos stel - la ma - ris et re - gi - na ce - lo - rum sal - va nos stel -

Pno. *f* *mp* *f* *Ped.*

Elec. $\frac{2}{4}$ $\frac{4}{4}$

105

106

107

108

Cl. 223

tr *sfz p* \leftarrow *f* *f* tr

Vc.

109 110 *f* tr

V1

la ma - ris et re - gi - na ce - lo - rum sal - va nos stel - la ma - ris

f

V2

la ma - ris et re - gi - na ce - lo - rum sal - va nos stel - la ma - ris

f

Pno.

3

Elec.

3/4

40

228

Cl.

ca. 10 sec.

Signe 1 de Nawal

ca. 15 sec.

pp

fff

Vc.

ca. 10 sec.

111

ca. 15 sec.

112

pp

fff

V1

ca. 10 sec.

pp

ca. 15 sec.

fff

et re - gi - na ce - lo - rum

V2

ca. 10 sec.

pp

ca. 15 sec.

fff

et re - gi - na ce - lo - rum

Pno.

ca. 10 sec.

ca. 15 sec.

pp

fff

Ped. →

Elec.